



KANSAS GEOLOGICAL SOCIETY

BULLETIN

Volume 99 Number 6

November - December 2024

Established 1925

IN THIS ISSUE

AAPG 2024 MCS Field Conference

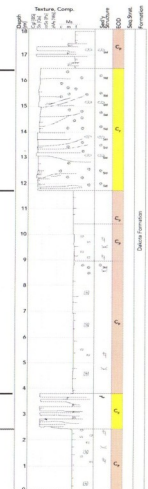
pages 11-15

HWY 156: Coastal Plain and Fluvial Rocks

- Paleosols with fluvial sandstone and channel deposits capping exposure
- Total measured section: 18 meters



KU KANSAS GEOLOGICAL SURVEY
The University of Kansas



Your 1/8 page ad here

**Use Your KGS Library
For All Your Printing Needs**

Old photos?
Old documents?

We can scan them for you!

Robert F. Walters Digital Library

The most complete source for Kansas data

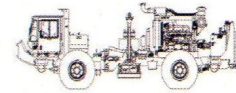
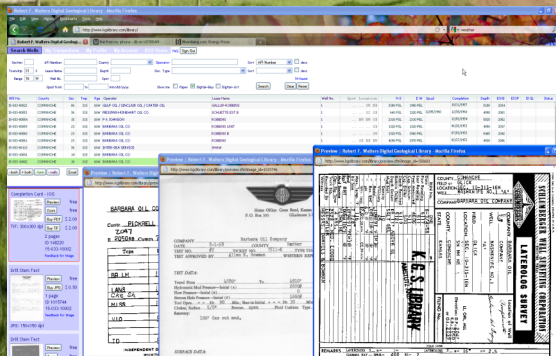
Database updated nightly

Day or Night

You can get to the data as you need it

www.kgslibrary.com

To Join: call 316-265-8676



**Proudly Celebrating 25+ Years
Acquiring Seismic Data Throughout the
Continental United States**

WICHITA

Nicolle Jausel
(316) 636-5552

Nicolle@paragongeo.com

DENVER

Kim Nordberg
(303) 888-8885

Knordberg@paragongeo.com

HOUSTON

Brent Propst
(832) 643-5158

Bpropst@paragongeo.com

OKLAHOMA CITY

Joe Broussard
(405) 213-9859

Jbroussard@paragongeo.com

website: www.paragongeo.com

We Invite You

To join the

***Kansas Geological
Foundation***

***\$50.00 membership is
tax deductible***

Call 316-265-8676

Or send checks to:

Kansas Geological Foundation

1704 S. Baehr

Wichita, KS 67209

Table of Contents

Features: AAPG 2024 MCS Field Conference Pics 11-15

KGS Events:

Departments & Columns:

KGS Tech Talks	4
Advertiser's Directory	7
In Memoriam	17
Professional Directory	18
Kansas Geological Foundation Cornerstone and KGF News	21-23
Kansas Geological Foundation Memorials	24-26
Exploration Hilights by John Morrison - IOG	28-29

ON THE COVER:

**Stop #1 on the AAPG 2024 MCS Field Conference
October 18-20, 2024
Fort Hays State University**

The Kansas Geological Society Bulletin, which is published bimonthly in electronic format, seeks short papers dealing with any aspect of Kansas geology, including petroleum geology, studies of producing oil or gas fields, and outcrop or conceptual studies. Maximum length of papers is 6 pages as they appear in the Bulletin, including text, references, figures and/or tables, and figure/table captions. Inquiries regarding manuscripts should be sent to manager@kgslibrary.com or mailed to 1704 S. Baehr, Wichita, KS 67209. Specific guidelines for manuscript submission appear in each issue of the Bulletin, which can also be accessed on-line at the Kansas Geological Society web site at <http://www.kgslibrary.com>

SOCIETY Technical Meetings

All Technical Meetings will be on Zoom

December 11, 2021 : Rebecca Dodge - *“The Fate of Global Ice - The View From Above”*

Please remember to check the website for the most up to date information on Technical Talks

<http://www.kgslibrary.com/techtalks.cfm>

Note: For those geologists who need 30 professional development hours (pdh) to renew their licenses, there will be a sign-in sheet at each presentation and also a certificate of attendance.



The New Home of the KGS

1704 S. Baehr

KANSAS GEOLOGICAL SOCIETY



BOARD OF DIRECTORS

PRESIDENT

Doug Davis

PRESIDENT-ELECT

Seth Evenson

SECRETARY

Lori Landes

TREASURER

Doug Louis

DIRECTORS

Kimberly Black
David Barker
Preston Doll

ADVISORS

Jon Callen
Dick Jordan

BULLETIN STAFF

EDITOR

Wes Hansen (316) 772-6188

ADVERTISING

Kent Scribner (316) 640-1154

MEMORIALS

Wesley Hansen (316) 772-6188

EXPLORATION HIGHLIGHTS

John H. Morrison, III
Independent O&G (316) 263-8281

STATE SURVEY

KS Geological Survey (785) 864-3965

SOCIETY NEWS

KGS Library (316) 265-8676

MANAGER

Angela Forrest (316) 265-8676

COMMITTEE CHAIRMEN

Advertising

Kent Scribner

Advisory

Annual Banquet

Doug Davis

Bulletin

Wesley Hansen

Computer Committee

Continuing Education

Distinguished Awards

Brian Fisher

Environmental

Kent Matson

Field Trip

Jerry Honas

Fishing Tournament

Future Plans

Golf

Dave Barker

Historian

Library

Ted Jochems

Membership

Larry Friend

Nomenclature

John H. Morrison, III

Picnic

Beth Isern

Public Relations

Shooting Tournament

Seth Evenson

Technical Programs

Doug Davis

Technical Committee

Ryan Dixon

Finance Committee

Tim Hellman, Chairman

Members: Chuck Brewer, David Doyel, Paul Gunzelman and Tom Funk

K.G.S. LIBRARY

PHONE 316-265-8676 FAX 316-265-1013

email: frontdesk@kgslibrary.com or

Web: www.kgslibrary.com

A.A.P.G. DELEGATES

Dennis Hedke
2025

Wesley Hansen
2025

The KGS *Bulletin* is published bi-monthly by the Kansas Geological Society, with offices at 1704 S. Baehr, Wichita, Kansas 67209 Copyright 2024, The Kansas Geological Society. The purpose of the *Bulletin* is to keep members informed of the activities of the Society and to encourage the exchange and dissemination of technical information related to the Geological profession. Subscription to the *Bulletin* is by membership in the Kansas Geological Society. Limited permission is hereby given by the KGS to photocopy any material appearing in the KGS *BULLETIN* for the non-commercial purpose of scientific or educational advancement. The KGS, a scientific society, neither adopts nor supports positions of advocacy, we provide this and other forums for the presentation of diverse opinions and positions. Opinions presented in these publications do not reflect official positions of the Society.



Nine Trucks Serving

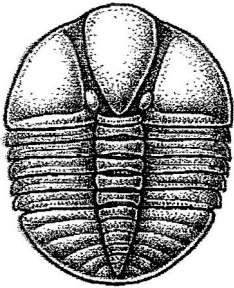
Kansas--Colorado--Texas--Nebraska--Illinois

DST's

Back Pressure testing (G1 7 G2)

Slick line services using the same Weatherford

Electronic Pressure Gauges used on DST's



1-800-728-5369

FAX 1-785-625-5620

www.trilobitetesting.com

trilobite@eaglecom.net

SHOPS LOCATED IN:

Hays, KS

Scott City, KS

Pratt, KS

Oberlin, KS

CAN YOU NAME THE CRITTER?

Sponsored by Trilobite Testing, Inc.

Is your paleo up to date?

If you know the name of the trilobite,
submit your guess via e-mail to
manager@kgslibrary.com

Remember that *Trilobite Testing* is
sponsoring your efforts, so be sure to thank
Paul Simpson the next time you see him.

**Bulletin committee members and PhD's in
Paleontology are prohibited from entering.**



Kansas Geological Society (KGS) Medallion for Scientific Distinction and Excellence

The Kansas Geological Society (KGS) Medallion for Scientific Distinction and Excellence may be given annually for peer-recognized, sustained significant scientific contributions to all facets of applied Kansas geology, including work either in Kansas or in surrounding states if the latter contributions pertain directly and significantly to Kansas geology. No more than one award may be given each year, an award does not have to be given every year, and members of the KGS Awards Committee that handle nominations for this award cannot nominate themselves for this award. The candidates need not be active KGS members, and they must be living at the time of selection. The primary consideration in the selection of a candidate shall be his or her sustained, published, significant contributions to any facet of Kansas geology. Contributions may be varied in form such as development of geologic concepts, advancement in discovery thinking, and recognized leadership in exploration concepts. Oral and/or written publications in peer-reviewed geological venues is a requisite criterion for any candidate for this award. The name of a candidate shall be presented by the Awards Committee to the KGS Board of Directors for their approval. Once approved, the recipient shall be presented an appropriate award in the form of a medallion or plaque recommended by the Awards Committee and approved by the Board of Directors at the annual business meeting of the society. This is a new award given by the KGS for distinction and achievement in Geological research in Kansas.

Awards Committee members are Sal Mazzullo and Mike Dealy

NAPE 2025
February 1, 2025
Houston, TX

2025 SWS AAPG
April 26
Fort Worth, TX

SEG/AAPG
IMAGE 2025
August 25, 2025
Houston, TX

Log in to
Walters Digital Library At
www.kgslibrary.com

Log in as our guest
and see the Society's Database

A convenient way to see what you might want to
order!

Call or email your order to:

316-265-8676

frontdesk@kgslibrary.com

ADVERTISER'S DIRECTORY

Duke Drilling	<i>page</i> 27
Kansas Geological Foundation	21
Murfin Drilling Company, Inc	27
PARAGON Geophysical Services, Inc	2
Professional Directory	18
Trilobite Testing	6
Walters Digital Library	2

ADVERTISER'S RATES: 2022

Full Page	B&W	Color
6 issues	\$2,000	\$2,500
3 issues	\$1,080	\$1,325
1 issue	\$480	\$525
1/2 Page		
6 issues	\$1,000	\$1,500
3 issues	\$540	\$825
1 issue	\$225	\$350
1/4 Page		
6 issues	\$600	\$900
3 issues	\$325	\$525
1 issue	\$150	\$250
1/8 Page		
6 issues	\$300	\$500
3 issues	\$175	\$325
1 issue	\$75	\$185
Professional Ad (Business Card)		
6 issues	\$90	\$180

Editor's Page

Dear KGS members and industry friends.,

Another year is closing, far to fast for us older folks. From my personal perspective, drilling activity has been down for the past 2-3 years. Although I have not retired from watching wells, I wonder if “I have been retired.”

I encourage my fellow geologists, engineers and seismic dudes to continue to explore our state and the rest of the Mid-continent. We need to keep the oil and gas industry and its many employees in good stead.



A new KGS Board has been elected. I wish to thank those who volunteered to run for office. We have challenges ahead for our society and library. Regrettably, my requests for photos, bios and industry experience to include in this issue was ignored. Having gone through the experience twice in trying to recruit candidates, I know it can be a dauntless task.

I wish you all I Merry Christmas, Happy Holidays and a prosperous Happy New Year .

Sincerely,

Wes



2024 KGS Board

President - Doug Davis

VP-President Elect - Seth Evenson

Secretary - Lori Landes

Treasurer - Doug Louis

Directors - Dave Barker Kimberly Black Preston Doll

**We Invite You
To join**

***Kansas
Geological
Foundation***

***\$50.00 membership is
tax deductible***

***Call 316-265-8676
Or send checks to:
Kansas Geological Foundation
1704 S. Baehr
Wichita, KS 67209***

Your Company

1/4 page ad

here

An Open Invitation to Young Geologists to Join AAPG

I would like to extend a special invitation to recent graduates and other young geological professionals to join AAPG. There are many young geologists outside the Wichita area that I have never met. They may work out of Great Bend or Hays, Kansas working with smaller oil and gas producers or working on their own as well site geologists. Kansas does have a future for the foreseeable future. The time is now to meet others from larger regional companies to forge a relationship for future employment. Young minds will be needed to replace those retiring and that other bad option.

I joined AAPG late in my career, much to my regret. I now serve voluntarily as a delegate for the Mid-Continent Section representing the Kansas Geological Society.

Respectfully yours,

Wesley D. Hansen Bulletin Editor and AAPG Delegate



AAPG MCS Field Conference
October 19, 2024
Stop #1 Dakota Formation
Junction I-70 and K156 in
Ellsworth County
Leaders Dr. Jay Kalbas and
Dr. Kate Andrzejewski
Kansas Geological Survey





Stop #2
Graneros Shale - Lake Wilson
Russell County,
Leader- Dr. Jonathan Sumrall
Fort Hays State University





Stop #3
Greenhorn Limestone
Road cut along US 281
(North of Russell)
Russell County





Stop #4
Carlile Shale
King Hill
Rooks County





Stop #5
Niobrara Formation
Castle Rock
Gove County



Robert F. Walters Digital Library

Log in as our Guest

username: guest

password: guest



316-265-8676

**Let Us Print Your Geo Reports
And Save Your Time For Finding More Oil & Gas**

Top Quality Color Printing For Our Membership

Email your files to: kgsorders@gmail.com

**Get Your Maps copied at the KGS library
We can scan, copy, and print up to 44" wide**

Color or Black & White

Solid Color @ \$4.00/sq. ft.

Line maps with color @ \$3.00/sq. ft.

In Memoriam

KGS and Industry Members Lost in 2023 and 2024

2023

Bill C. Romig

Dean Britting

Robert Llewellyn

Willis Nigh

Richard Cornett

Jim Reilly

Robert “Bob” Cowdery

Chuck Latham

I. Wayne Woolsey

2024

Paul Ramondetta

George Jones

Cecil O’Brate

Bob McCann

Arden Ratzlaff

Gary Griffith

Steve Davis

Austin Garner



PROFESSIONAL DIRECTORY

Kirk Rundle
Consulting Geophysicist

3D Seismic Design, Acquisition to Processing QC.,
Interpretation and Analysis, Subsurface Integration
7340 W. 21st. N., Ste. 100
Wichita, Kansas 67205

Office: 316-721-1421 Fax: 316-721-1843
Email: kirk@rundlegeo.com

ROGER L. MARTIN
Independent Petroleum Geologist

200 E 1st St, Ste 405, Wichita, KS 67202

Cell: 316-833-2722 Office: 316-250-6970
KS Field Cell: 316-655-1227

Email: rogermartingeo@yahoo.com

Covey - The Well Watchers

"One Thousand Wells and Counting"

Curtis E. Covey Wellsite Petroleum Geologist

Gas Trailer Cell: 316-217-4679 Office: 316-776-0367

Email: wellsitigeol@gmail.com

6548 Bedford Circle Derby, Kansas 67037

Gas Detection Trailer & Internet/Phone Communications

WESLEY D. HANSEN
Consulting Geologist

Well site Supervision • Geologic Studies

PO Box 46 Whitewater, KS 67154

Office/Mobile: (316) 772-6188

whansen4651@sbcglobal.net

Kansas - Colorado - Nebraska

42 Continuous Years in the Oil Patch



ELI J. FELTS
CONSULTING PETROLEUM GEOLOGIST

316.204.5059 EJJELTS47@GMAIL.COM

- VERTICAL & HORIZONTAL WELL-SITE SUPERVISION
- PROSPECT GENERATION & EVALUATION
- WELL-LOG ANALYSIS
- DIGITAL MAPPING SERVICES & GEOLOGICAL REPORTS
- KCC & COMPLIANCE SPECIALIST
- PROFESSIONALLY INSURED

COMPETITIVE PRICING & STATE OF THE ART SERVICES YOU CAN COUNT ON
CALL TODAY & RECEIVE (1) FREE DAY WELL-SITE TO NEW CLIENTS

M. ((Brad))ford Rine, Geologist

Licensed, Registered, Certified

PROSPECT EVALUATION PROSPECT ORIENTATION
WELLSITE SUPERVISION DRLG/COMPL CONSULTATION

RESERVOIR STUDIES PROPERTY EVALUATION

EXPERT TESTIMONY BANJO PICKER

100 South Main Suite #415 Email: rinemb@sbcglobal.net
Wichita, Kansas 67202 Office & Cell: (316) 250-5941



JOHN H. MORRISON, III
President

www.IOGsi.com Phone: 316-263-8281
3909 N. Sweet Bay St. Fax: 316-263-0874
Wichita, Kansas 67226-3501 Email: jmorrison@iogsi.com

MELLAND ENGINEERING, INC.

Petroleum Engineering & Geological Consulting

James E. Melland, P.E., P.G.

President

Office: (620) 241-4621 Fax: (620) 241-2621

jamesm@mellandengineering.com

www.mellandengineering.com

P.O. Box 841, McPherson, KS 67460-0841

Special offer to those who actually read
the online bulletin
Wes Hansen will buy the first round on a
date and place to be announced later.

Text IMIN to 316-772-6188

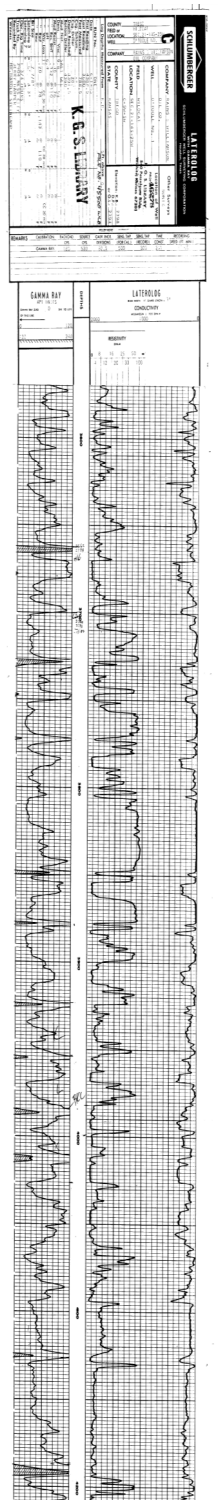
First 15 responders only

Macklin Armstrong
Consulting Geologist
Kansas - Colorado - Nebraska
Wellsite Supervision Prospect Evaluation
armstrong.mac@gmail.com
316-209-5047

Your business card ad
Could be right here
For only \$90/year

Your business card ad
Could be right here
For only \$90/year

*The KGS Library is pleased to
announce a new service*



Creating
LAS files
from our logs
or yours

**\$20.00 per
curve!!**

**Quick
turn-around**

Send us your log file
or tell us which of
ours you would like
converted.

316-265-8676



**Kansas Geological
Foundation
Video / DVD Collection**

The KGF has an extensive
collection of
videos available for check-out at
no charge.

Only pay for shipping back.

These are ideal for classroom or
general public viewing.

See the web for titles &
descriptions

www.kgfoundation.org

Call 316-265-8676

Ask for Rhonda to check
out videos

A shout out to Kansas Oil and Gas Industry

Service Companies

Oil prices are recovering nicely with WTI about \$80 per barrel and Kansas posted price about \$70 per barrel

Now is the time to resume advertising in the KGS Bulletin

Let our several hundred members know that your company is still active and ready to work.

Your half page ad would look great here.

Color or black and white

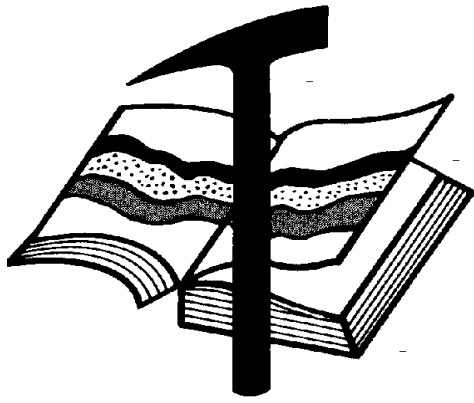
Contact Kent Scribner at 316-640-1154

KGS members please check your files

Fellow KGS members, please remember to check your files of elogs and geologist reports against the KGS paper library and the WDL before discarding them. I was contacted by John Morrison recently about a well I watched years ago that had some tops and DST info missing from his completion card. I took pics from my geo report of tops and DST results and sent them to John to update his card data. If I was to go through all of my files, I'm sure I have many logs and geo reports that are not in the files of either the KGS paper or the WDL. Before I hang things up in my career, I vow to go through all of my data and get it donated and scanned.

KCC rules allow an operator to hold information confidential for a two year period. As long as the well in question is older than the two year period, one can release the data. If one has concerns about alienating a client, of course, feel free to ask for permission.

Wes Hansen



Kansas Geological Foundation

Web Site: www.kgfoundation.org

**212 North Market
Wichita, Kansas 67202**

A not-for-profit educational and scientific corporation

GOALS:

- promote geology and earth science
- preserve geological records
- establish memorials and endowments
- support field trips and seminars
- financial aid and grants to students

PLEASE HELP SUPPORT THE FOUNDATION

Kansas Geological Foundation Services

The Kansas Geological Foundation provides the following services as a part of the organization's commitment to educate the public regarding earth science.

Speaker's Bureau

A list of speakers available to talk about various aspects of geology may be obtained by contacting Wes Hansen at the KGS Library, 265-8676. This service is free to the public.

DVD/Videotape Library

The KGF maintains a DVD & videotape library focused primarily on the various fields of earth science. These tapes may be checked out without charge by the public. To obtain a list of tapes, please contact the KGS Library, 1704 S, Baehr Wichita, KS 67209 or call Wes Hansen at 265-8676.

The Kansas Geological Foundation was founded in March, 1989 as a not-for-profit corporation under the guidelines of section 501(c)(3) of the tax code to provide individuals and corporations the opportunity to further the science of geology. It is dedicated to providing charitable, scientific, literary and educational opportunities in the field of geology for the professional geologist as well as the general public.

KGF can receive in-kind donations through which the donor may receive a tax deduction. Of equal importance, the KGF provides the financial resources to sort, process and file this data at the KGS library. If you have a donation to make, please contact the KGF at 265-8676.

Your tax-deductible membership donation helps to defray the cost of processing donations and to support public education programs about the science of geology. Annual membership begins at \$50.00 per year. Donations of \$100.00 or more are encouraged through the following clubs:

Century Club	\$ 100 to \$ 499
\$500 Club	\$ 500 to \$ 999
Millennium Club	\$1000 to \$5000
President's Club	\$5000 and over

Kansas Geological Foundation

Kansas Geological Foundation News

Fall 2024 KGF Scholarship Recipients

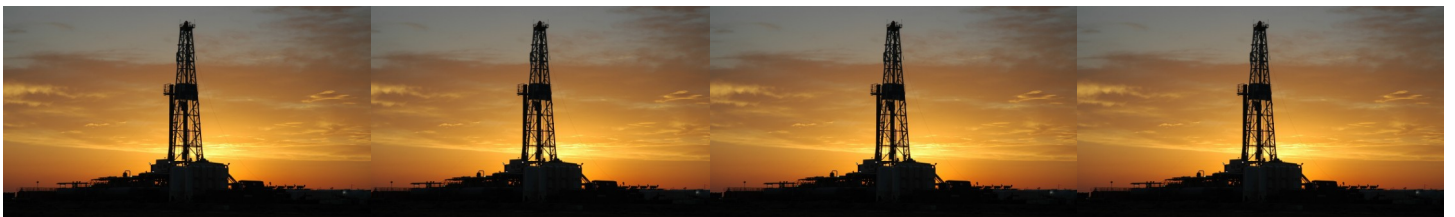
Name	University	Scholarship	Amount
Gyasi Kobina	Kansas State University	KGF Scholarship	\$1000.00
Deborah Agbamu	Kansas State University	KGF Scholarship	\$1000.00
Samantha Villasana	Kansas State University	KGF Scholarship	\$500.00
Makenna Roths	Wichita State University	KGF Scholarship	\$1000.00
Mitchell Baker	Wichita State University	KGF Scholarship	\$500.00

KGF Grants

Sarah Lamm, PhD candidate at KU

\$2500.00 for Rocks and Rockets Event in Colby

August 2024



Kansas Geological Foundation News

Students: The KGF awards scholarships each December and May. Check with your department chairs for applications. You must submit complete applications by the deadline.

Scholarship Applications for the Fall semester will be due by May 1, 2024.

Grants to help with research on Kansas related geology are also considered for aid.

The Kansas Geological Foundation Needs You!



By permission

The KGF provides the financial resources to sort, process and file, in-kind donations of geological data at the KGS library. Due in large part to the KGF this unique and rare well of information is being made available to all. Please consider telling your company management and colleagues about the benefits of a library that continues expanding in part because of the KGF.

We very much value and need your financial support.

KGF Officers and Board Members

Executive Director-Liaison Kerry Parham

President - Tim Hellman

Vice President -

Treasurer - Jacob Dyson

Secretary - Beth Isern

Board Members

Brad Rine (24) Dennis Hedke (24)

Nick Hixon (25) Kent Crisler

Rusty Mourning

Scholarships - Nick Hixon

Grants - Dennis Hedke

Publicity - Wes Hansen

PLEASE SUPPORT THE INTEGRATION PROJECT BY DONATING FINANCIALLY TO THE KANSAS GEOLOGICAL FOUNDATION

Kansas Geological Foundation Memorials

KGS Member	Date Deceased	Memorial Established
Dan Bowles	09/89	1990
John Brewer	10/89	1990
George Bruce	08/89	1990
Robert Gebhart	01/90	1990
Ray Anderson, Jr.	11/90	1990
Harold McNeil	03/91	1991
Millard W. Smith	08/91	1991
Clinton Engstrand	09/91	1991
M.F. "Ted" Bear	10/91	1991
James & Kathryn Gould	11/91	1991
E. Gail Carpenter	06/91	1993
Benton Brooks	09/92	1992
Robert C. Armstrong	01/93	1993
Nancy Lorenz	02/93	1993
Norman R. Stewart	07/93	1993
Robert W. Watchous	12/93	1993
J. George Klein	07/94	1994
Harold C.J. Terhune	01/95	1995
Carl Todd	01/95	1995
Don R. Pate	03/95	1995
R. James Gear	05/95	1995
Vernon Hess	06/95	1995
E. K. Edmiston	06/95	1995
Jack Rine	07/95	1995
Lee Cornell	08/95	1995
John Graves	10/95	1995
Wilson Rains	10/95	1995
Heber Beardmore, Jr.	09/96	1996
Elmer "Lucky" Opfer	12/96	1996
Raymond M. Goodin	01/97	1997
Donald F. Moore	10/92	1997
Gerald J. Kathol	03/97	1997
James D. Davies	08/88	1997
R. Kenneth Smith	04/97	1997
Robert L. Dilts	05/97	1997
Delmer L. Powers	06/72	1997
Gene Falkowski	11/97	1997
Arthur (Bill) Jacques	01/98	1998
Bus Woods	01/98	1998
Frank M. Brooks	03/98	1998
Robert F. Walters	04/98	1998
Stephen Powell	04/98	1998
Deane Jirrels	05/98	1998
William G. Iversen	07/98	1998
Ann E. Watchous	08/98	1998
W.R. "Bill" Murfin	09/98	1998
Donald L. Hellar	11/98	1998
Joseph E. Rakaskas	01/99	1999
Charles W. Steincamp	02/99	1999
Robert and Betty Glover	10/96	1998
Howard E. Schwerdtfeger	11/98	1999
W. W. "Brick" Wakefield	03/99	1999
V. Richard Hoover	01/00	2000
Warren E. Tomlinson	01/00	2000
James A. Morris	01/00	2000
Eric H. Jager	03/00	2000
Kenneth W. Johnson	03/00	2000

Kansas Geological Foundation Memorials

KGS Member	Date Deceased	Memorial Established
Dean C. Schaaque	03/00	2000
Fred S. Lillibridge	05/00	2000
Jerry A. Langrehr	07/00	2000
Clark A. Roach	07/00	2000
Floyd W. "Bud" Mallonee	10/00	2000
Ralph W. Ruuwe	09/00	2000
Robert L. Slamal	02/01	2001
Jerold E. Jespersen	06/01	2001
William A. Sladek	06/01	2001
Harlan B. Dixon	06/01	2001
Edward B. Donnelly	08/01	2001
Richard P. Nixon	02/02	2002
Robert W. Frensley	12/01	2002
Gerald W. Zorger	01/02	2002
Don L. Calvin	03/02	2002
Claud Sheats	02/02	2002
Merle Britting	2002	2002
Harold Trapp	11/02	2002
Donald M. Brown	11/02	2003
Elwyn Nagel	03/03	2003
Robert Noll	09/03	2003
Benny Singleton	09/03	2003
Jay Dirks	2003	2003
J. Mark Richardson	02/04	2004
John "Jack" Barwick	02/01	2004
Richard Roby	03/04	2004
Ruth Bell Steinberg	2004	2004
Gordon Keen	03/04	2004
Lloyd Tarrant	05/04	2004
Robert J. "Rob" Dietterich	08/96	2004
Mervyn Mace	12/04	2004
Donald Hoy Smith	04/05	2005
Richard M. Foley	06/05	2005
Wayne Brinegar	06/05	2005
Charles B. Moore	09/96	2005
Jack Heathman	05/06	2006
Charles Kaiser	09/06	2006
Rod Sweetman	08/06	2006
Karl Becker	10/06	2006
Frank Hamlin	10/06	2006
Marvin Douglas	12/06	2006
Robert W. Hammond	04/07	2007
Eldon Frazey	04/07	2007
Pete Amstutz	05/07	2007
Charles Spradlin	05/07	2007
Donald R. "Bob" Douglass	09/07	2007
Vincent Hiebsch	11/07	2007
Glen C. Thrasher	03/08	2008
Peg Walters	06/08	2008
Theodore "Ted" Sandberg	07/08	2008
James Ralstin	11/08	2008
Earl Brandt	04/09	2009
Walter DeLozier	05/09	2009
Don D. Strong	1/10	2010
John Stone	02/10	2010
Craig Caulk	03/10	2010
Joseph E. Moreland, Jr.	03/10	2010

Kansas Geological Foundation Memorials

KGS Member	Date Deceased	Memorial Established
Gene Garmon	03/10	2010
James F. Dilts	05/10	2010
Jerry Pike	05/10	2010
Donald Hollar	06/10	2010
Delbert Costa	08/10	2010
John Tanner	08/10	2010
William (Bill) Owen	09/10	2010
Harold (Hal) Brown	10/10	2010
Edmund G. Lorenz	11/10	2010
Thomas E. Black	05/11	2011
Wayne E. Walcher	07/11	2011
Henry F. Filson	07/11	2011
Thomas Ray	07/11	2011
Edgar E. Smith	09/11	2012
Marilyn Messinger	06/13	2013
Micheal Mitchell	09/13	2013
Orvie Howell	11/13	2013
James Thompson	11/13	2013
Dick Rowland	09/13	2014
Robbie Thompson	12/13	2014
Kris Kennedy	04/14	2015
Annette Hedke	02/15	2015
James Devlin	04/15	2015
Robert Gensch	09/15	2015
Jerald Rains	05/16	2016
Max Houston	05/16	2016
Robert "Gus" Messinger	01/17	2017
Jimmy Wayne Gowens	04/17	2017
Walter H. Martz Jr.	01/18	2018
Gary Sandlin	01/17	2018
Douglas McGinness	12/16	2018
Allen Siemens	06/18	2018
Ernest R. "Ernie" Morrison	09/18	2018
E. G. "Elbie" McNeil	12/18	2018
Robert Maxwell (Bob) Euwer	1/19	2019
J. Fred Hambright	12/18	2019
W. Lynn Watney	7/19	2019
Byron Hummon	12/18	2019
Mike Raymond	11/19	2019
James Roberts, Jr.	3/19	2019
Herb Johnson	8/19	2020
Lloyd Parrish	2/20	2020
Bruce Reed	5/20	2020
Bob Scull	6/20	2020
Thornton E. Anderson	7/20	2020
Don Shawver	12/16	2020
Phillip Hart	12/20	2021
Timothy Lauer	05/21	2021
Fredrick Stump	09/21	2021
Larry J. Richardson	10/21	2021
Robert Cowdery	12/23	2023

18 Drilling Rigs
To depth of 9,500 ft.



WESTERN KANSAS
SOUTHERN NEBRASKA
EASTERN COLORADO
OKLAHOMA PANHANDLE

For contract information contact:

William Murfin
Drilling Manager

316-258-8888 (Direct)
316-267-3241 (Main)

250 N. Water, Ste. 300
Wichita, KS 67202

DUKE
DRILLING COMPANY

ROTARY DRILLING CONTRACTOR

620 Hubbard PO Box 823
Great Bend, KS 67530

100 S. Main, Ste. 410,
Wichita, KS 67202

Your Company

1/8 page ad here

BULLETIN CONTENT POLICY

Effective January 1, 2018, only ads for service companies and geologists offering their services will be permitted in the KGS Bulletin. Furthermore, only content of geologic interest or official KGS functions (technical talks, annual banquet, golf tourney, picnic etc.) will be permitted in this bulletin. This policy is in keeping with maintaining a professional standard for this publication. Any interpretation of this policy rests solely with the editor of this bulletin.



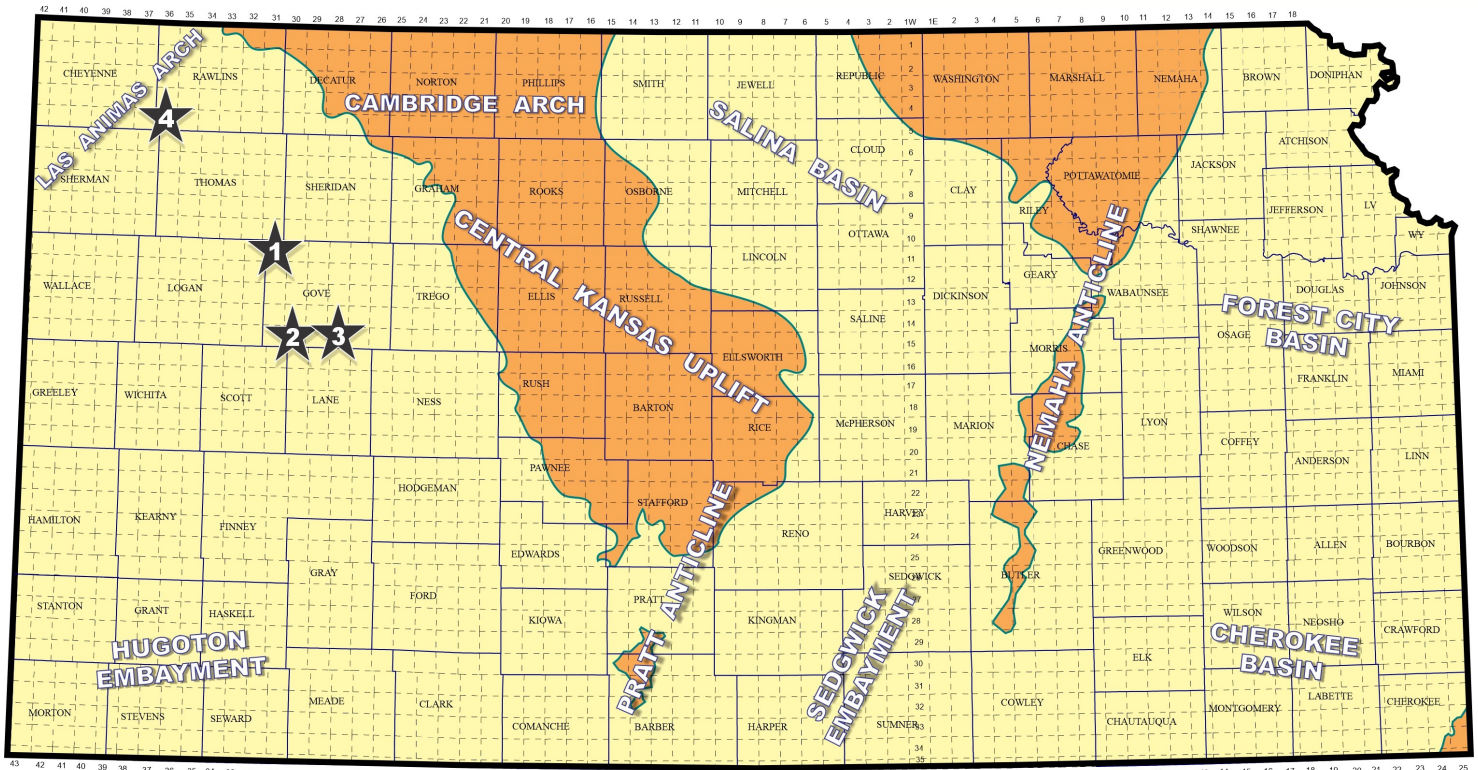
AAPG Needs You!

Professional geoscientists, share your world!

The Mid Continent Section has 17 AAPG Student Chapters, but only 3 Visiting Geoscientists...which makes it almost impossible to have a professional geoscientist visit to each school at least once a year or even once every two years. The aim of AAPG's program is to give students a flavor of a professional life in energy resources. It also hopes to encourage dialog between industry and academia. To be a Visiting Geoscientist bearing the AAPG flag, you are asked to have at least 5 years of experience and make at least one visit per year to a university. It can be a school with an AAPG Student Chapter, or a college/university without one. Your choice.

The Mid Continent schools with Student Chapters are: Missouri University, Fort Hays State University, Iowa State University, Kansas State University, Missouri State University, University of Nebraska, Northwest Missouri State University, Oklahoma State University, University of Oklahoma, University of Arkansas, University of Iowa, University of Kansas, University of Missouri, Columbia University of Tulsa and Wichita State University.

Contact Robbie Gries, co-Chair VGP committee, Denver, if you are interested in learning more. rrgries@aol.com



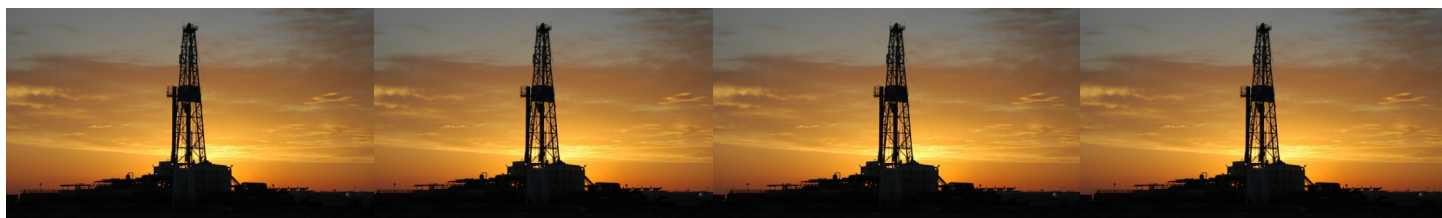
Map courtesy of Marc Summervill

1) Shakespeare Oil Company, Salem (IL), has discovered new oil reserves nearly a mile south of abandoned Shawnee (Toronto) oil production with Lansing-Kansas City oil shows in the “Cleveland Creek” oil field in Gove County. The #1-36 Brungardt produces undisclosed crude oil from the Morrow Sands site in the NW/4 of section 36- T11s- R31W. Rotary total depth was reached at 4,582 ft. Completion details remain confidential. The new field lies about five miles south and four miles west of Grinnell, Kansas. (Ref: API 15-063-22452)

2) BEREXCO LLC, Wichita (KS), has established the “York Northwest” oil field in Gove County. New reserves were discovered at the #1-13 Herman, NW/4 of section 13- T15s- R30W, about ten miles north and one mile east of Healy, Kansas. The well was completed in October for 50 BOPD, with no water. Pay comes from Lansing-Kansas City Swope formation perforated depth from 3,860 to 3,865 ft. The rotary total depth was 4,310 ft. (Ref: API 15-063-22446)

3) M G Oil, Inc., Russell (KS), is producing oil from the Lansing-Kansas City 'E' formation at the #2-19 Coberly in Gove County. Spotted in the SE/4 of section 19- T15s- R28W, the well opens a new unnamed pool approximately eight miles north and one mile west of Shields, KS. Duke Drilling tools bottomed the well around 4,300 ft. Completion details are confidential. The field area is situated nearly one mile northwest of established production in the "Ziegenbalg Southwest" pool which has produced oil from the LKC since July 2021. (Ref: API 15-063-22453)

4) Downing - Nelson Oil Company, Inc., Hays (KS), has stepped nearly three-quarter mile northwest of producing wells in the "K-S" oil field to establish a new unnamed pool in Rawlins County. The #1-8 Scott, SE/4 of section 8- T5s- R36W, is producing an undisclosed amount of crude oil from the Cherokee formation. The well is drilled to a total depth of 4,911 ft, about eleven miles south of McDonald, KS. Completion details are confidential. Downing - Nelson has produced almost 25,000 BO from three wells in the "K-S" field which they discovered in 2021 in section 16- T05s- R36W. Production comes from the Cherokee Limestone (2021) and the Marmaton Altamont 'B' (2023) formations. Their #1-8 Scott discovery well lies (Ref: API 15-153-21334)



November 2024

Sun	Mon	Tue	Wed	Thu	Fri	Sat
					1	2
3	4	5	6	7	8	9
10	11	12 KGS Board	13	14	15	16
17	18	19	20 KGF Board	21	22	23
24	25	26	27	28 Thanksgiving KGS Library Closed	29	30

December 2024

Sun	Mon	Tue	Wed	Thu	Fri	Sat
1	2	3	4	5	6	7
8	9	10 KGS Board	11	12	13	14
15	16	17	18 KGF Board	19	20	21
22	23	24 Christmas	25 KGS	26 Library	27 Closed	28
29	30	31				